

## **Kraus (w/Legs into cups)**

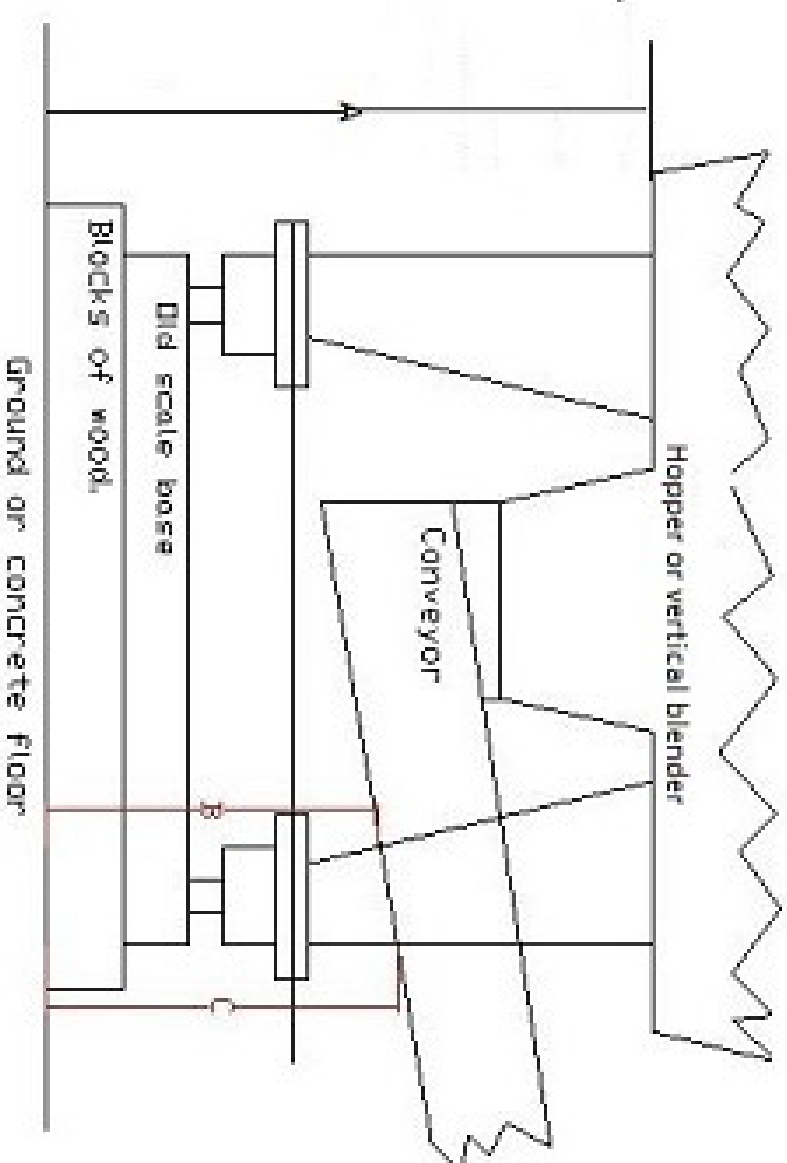
For Kraus Systems requiring legs because there are no matching plates to connect the scales.

For orientation do not consider north, south, etc. only that side "A" is always the side opposite the conveyor and side "B" is always left/right of the conveyor.

Please confirm:

Capacity (Tons or pounds) \_\_\_\_\_

## Kraus Page 2

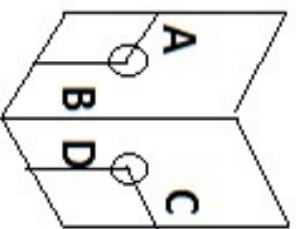


A: \_\_\_\_\_

B: \_\_\_\_\_

C: \_\_\_\_\_

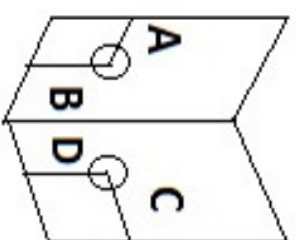
## Edge Of Angle to Edge of Angle

A \_\_\_\_\_  
B \_\_\_\_\_

Center hole to edge

A \_\_\_\_\_  
B \_\_\_\_\_  
C \_\_\_\_\_  
D \_\_\_\_\_

Center Hole to Edge

A \_\_\_\_\_  
B \_\_\_\_\_  
C \_\_\_\_\_  
D \_\_\_\_\_

Convey

Center hole to edge

A \_\_\_\_\_  
B \_\_\_\_\_  
C \_\_\_\_\_  
D \_\_\_\_\_

Center hole to edge

A \_\_\_\_\_  
B \_\_\_\_\_  
C \_\_\_\_\_  
D \_\_\_\_\_